

Model Animal Food Safety Plan for Distillers Grains

Table of Contents:

Page Number

Ingredient Form

Product Description

Process Flow

Hazard Analysis

Critical Limit, Monitoring & Corrective Actions

Record Keeping & Verification

SOP's

Food Safety Summary Form

Product Description Form (2)

Product Category: Distillers Dried Grains w/solubles

1. Product name(s)	DDG's w/solubles
2. Product safety properties (Moisture, Temperature, NPN, etc.)	Potential for increased aflatoxin & fumonisin levels. Finished product: Keep aflatoxin less than 100 ppb Keep fumonisin less than 30 ppm
3. Intended use and customer	Feedlots, on farm mixers for weaned ruminant animals (excluding dairies) and commercial feed mills (not making dairy feed)
4. Type of packaging	Bulk
5. Shelf life	Under proper storage conditions up to 6 months
6. Where will the product be sold?	To end users and brokers
7. Labeling instructions	Meet state & federal requirements Aflatoxin labeled at 100ppb max Fumonisin labeled at 30 ppm max Label would carry appropriate cautionary statement Label states product should not consist of more than 50% of the overall total diet.
8. Special distribution control	Not to be sold to dairies

--	--

Approved: RR

Date:

7/15/21

Product Description Form (2)

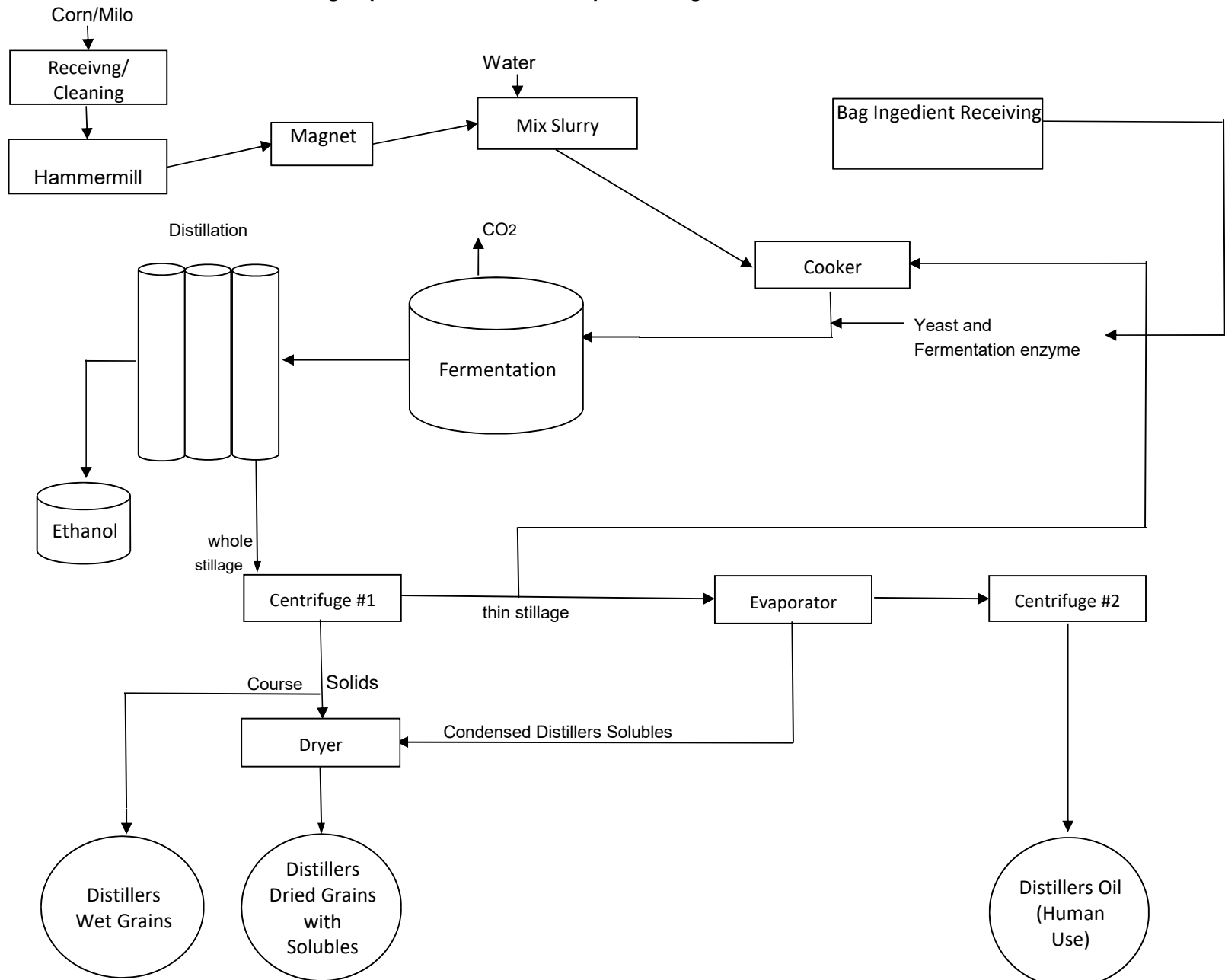
Product Category: _Distillers Wet Grains

1. Product name(s)	Distillers wet grains
2. Product safety properties (Moisture, Temperature, NPN, etc.)	Potential for increased aflatoxin & fumonisin levels. Finished product: Keep aflatoxin less than 100 ppb Keep fumonisin less than 30 ppm
3. Intended use and customer	Feedlots, on farm mixers for weaned ruminant animals (exclude dairies)
4. Type of packaging	Bulk
5. Shelf life	~7 days
6. Where will the product be sold?	To end users and brokers
7. Labeling instructions	Meet state & federal requirements Aflatoxin labeled at 100ppb max Fumonisin labeled at 30 ppm max Label would carry appropriate cautionary statements. Label states product should not consist of more than 50% of the overall total diet.
8. Special distribution control	Not to be sold to dairies

Approved: RR

Date 7/15/21

R&S High Spirits Ethanol Partnership Flow Diagram



Hazard Analysis Form (4)

Ingredient or Process Step	Known or reasonably foreseeable hazards introduced, increased or controlled at this step	Do known or reasonably foreseeable hazards require a preventive control based on Severity and Probability "Yes" or "No"	Explanation/Justification	Preventive Control Measures Applied	Is the Preventive Control Applied at this Step? "Yes" or "No"
Corn/Milo	Biological None noted at this time				
	Chemical Aflatoxin/Fumonisin/DON	Yes	<p>Alfatoxin & Fumonisin can be concentrated the ddg's finished product at 3-4 times original level.</p> <p>Grain is coming from area without out history of concern for DON. Federal guidance is 30 ppm for DON in DDG's.</p> <p>Wet grains not concerned with above due to ~70% moisture level will dilute.</p> <p>At receiving corn over 20 ppb aflatoxin & 5 ppm fumonisin is rejected (checking all loads)</p> <p>At receiving milo over 20 ppb aflatoxin is rejected. (spot</p>		

R&S High Spirits Ethanol Partnership

			checking loads and all new supplier's 1 st & 2nd load. Grain receiving SOP. End Products labeled les than 100 ppb aflatoxin & less than 30 ppm fumonisin. Per Labeling SOP		
	Physical Possible metal, wood, rock and plastic	no	Grain cleaning at time received is removing.		

Product Category: Animal Food __Wet Grains & DDG's_____ Intended Species: __Weaned Beef Cattle_____

Life Stage: __Older than 4 months_____ Date: 9/14/21 PCQI: RR

Hazard Analysis Form (4)

Product Category: Animal Food __ Wet Grains & DDG's _____ Intended Species: __ Weaned Beef Cattle Life Stage:

Ingredient or Process Step	Known or reasonably foreseeable hazards introduced, increased or controlled at this step	Do known or reasonably foreseeable hazards require a preventive control based on Severity and Probability "Yes" or "No"	Explanation/Justification	Preventive Control Measures Applied	Is the Preventive Control Applied at this Step? "Yes" or "No"
Water	Biological None noted at this time		Municipal water or Potable water well		
	Chemical None noted at this time		Municipal water or Potable water well		
	Physical None noted at this time				

__ Older than 4 months _____ Date: 9/14/21

PCQI: RR

Hazard Analysis Form (4)

Product Category: Animal Food __ Wet Grains & DDG's _____ Intended Species: __ Weaned Beef Cattle __ Life Stage:

Ingredient or Process Step	Known or reasonably foreseeable hazards introduced, increased or controlled at this step	Do known or reasonably foreseeable hazards require a preventive control based on Severity and Probability "Yes" or "No"	Explanation/Justification	Preventive Control Measures Applied	Is the Preventive Control Applied at this Step? "Yes" or "No"
Yeast	Biological None noted at this time		Animal food grade approved. Approved supplier List		
	Chemical None noted at this time		Animal food grade approved. Approved supplier list		
	Physical None noted at this time		Manufactures should control this at their manufacturing steps. Approved Supplier list.		

__ Older than 4 months _____ Date: 9/14/21

PCQI: RR

Product Category: Animal Food __Wet Grains & DDG's_____ Intended Species: __Weaned Beef Cattle__ Life Stage:

Ingredient or Process Step	Known or reasonably foreseeable hazards introduced, increased or controlled at this step	Do known or reasonably foreseeable hazards require a preventive control based on Severity and Probability "Yes" or "No"	Explanation/Justification	Preventive Control Measures Applied	Is the Preventive Control Applied at this Step? "Yes" or "No"
Fermentation Enzymes	Biological None noted at this time		Animal food grade approved. Approved supplier list.		
	Chemical None noted at this time		Animal food grade approved. Approved supplier list.		
	Physical None noted at this time		Manufactures should control this at their manufacturing steps. Approved supplier list		

__Older than 4 months_____ Date: 9/14/21

PCQI: RR

Hazard Analysis Form (4)

Ingredient or Process Step	Known or reasonably foreseeable hazards introduced, increased or controlled at this step	Do known or reasonably foreseeable hazards require a preventive control based on Severity and Probability "Yes" or "No"	Explanation/Justification	Preventive Control Measures Applied	Is the Preventive Control Applied at this Step? "Yes" or "No"
Corn/Milo Receiving/Cleaning	Biological None noted at this time				
	Chemical Aflatoxin/Fumonisin/DON	yes	<p>Alfatoxin & Fumonisin can be concentrated the ddg's finished product at 3-4 times original level.</p> <p>Grain is coming from area without out history of concern for DON. Federal guidance is 30 ppm for DON in DDG's.</p> <p>Wet grains not concerned with above due to ~70% moisture level will dilute.</p> <p>At receiving corn over 20 ppb aflatoxin & 5 ppm fumonisin is rejected (checking all loads)</p> <p>At receiving milo over 20 ppb aflatoxin is rejected. (spot</p>		

R&S High Spirits Ethanol Partnership

			checking loads and all new supplier's 1 st & 2nd load. Grain receiving SOP. End Products labeled les than 100 ppb aflatoxin & less than 30 ppm fumonisin. Per Labeling SOP		
	Physical Possible metal, wood, rock and plastic	no	Grain cleaning at time received		

Product Category: Animal Food Distillers Wet Grains & DDG's Intended Species: ___ Weaned Beef Cattle Life Stage: Older than 4 months _____ PCQI: RR Date 9/14/21

Date: _____ PCQI Initial: _____

Ingredient or Process Step	Known or reasonably foreseeable hazards introduced, increased or controlled at this step	Do known or reasonably foreseeable hazards require a preventive control based on Severity and Probability "Yes" or "No"	Explanation/Justification	Preventive Control Measures Applied	Is the Preventive Control Applied at this Step? "Yes" or "No"
Bagged receiving of yeast and fermentation enzymes	Biological None noted at this time		Animal food grade approved		
	Chemical None noted at this time		Animal food grade approved		
	Physical None noted at this time		Manufactures should control this at their manufacturing steps. Not using supply chain program		

Product Category: Animal Food Distillers Wet Grains & DDG's Intended Species: Weaned Beef Cattle Life Life Stage: Older than 4 months _____ PCQI: RR Date 9/14/21

Ingredient or Process Step	Known or reasonably foreseeable hazards introduced, increased or controlled at this step	Do known or reasonably foreseeable hazards require a preventive control based on Severity and Probability "Yes" or "No"	Explanation/Justification	Preventive Control Measures Applied	Is the Preventive Control Applied at this Step? "Yes" or "No"
Hammermill	Biological None noted at this time	no			
Hammermill	Chemical None noted at this time	no			
Hammermill	Physical Metal from Hammermill	yes	Magnet after grinding process. Frequency, responsible employee and log described in Magnet cleaning SOP		

Product Category: Animal Food Distillers Wet Grains & DDG's Intended Species: Weaned Beef Cattle Life Stage: Older than 4 months _____ PCQI: RR Date 9/14/21

Ingredient or Process Step	Known or reasonably foreseeable hazards introduced, increased or controlled at this step	Do known or reasonably foreseeable hazards require a preventive control based on Severity and Probability "Yes" or "No"	Explanation/Justification	Preventive Control Measures Applied	Is the Preventive Control Applied at this Step? "Yes" or "No"
Magnet	Biological None noted at this time				
	Chemical None noted at this time				
	Physical Metal	yes	Checking magnet frequency, log and responsible employee listed in SOP for magnet operations.		

Ingredient or Process Step	Known or reasonably foreseeable hazards introduced, increased or controlled at this step	Do known or reasonably foreseeable hazards require a preventive control based on Severity and Probability "Yes" or "No"	Explanation/Justification	Preventive Control Measures Applied	Is the Preventive Control Applied at this Step? "Yes" or "No"
Mix slurry tank	Biological None noted at this time				
	Chemical None noted at this time				
	Physical None noted at this time				

R&S High Spirits Ethanol Partnership

--	--	--	--	--	--

Product Category: Animal Food Distillers Wet Grains & DDG's Intended Species: Weaned Beef Cattle Life Life Stage: Older than 4 months_____ PCQI: RR Date 9/14/21

Ingredient or Process Step	Known or reasonably foreseeable hazards introduced, increased or controlled at this step	Do known or reasonably foreseeable hazards require a preventive control based on Severity and Probability "Yes" or "No"	Explanation/Justification	Preventive Control Measures Applied	Is the Preventive Control Applied at this Step? "Yes" or "No"
Cooker	Biological None noted at this time				
	Chemical None noted at this time				
	Physical None noted at this time				

R&S High Spirits Ethanol Partnership

--	--	--	--	--	--

Product Category: Animal Food Distillers Wet Grains & DDG's Intended Species: Weaned Beef Cattle Life Life Stage: Older than 4 months_____ PCQI: RR Date 9/14/21

Ingredient or Process Step	Known or reasonably foreseeable hazards introduced, increased or controlled at this step	Do known or reasonably foreseeable hazards require a preventive control based on Severity and Probability "Yes" or "No"	Explanation/Justification	Preventive Control Measures Applied	Is the Preventive Control Applied at this Step? "Yes" or "No"
Adding Yeast and fermentation enzyme	Biological None noted at this time				
	Chemical Inclusion of hand adds	no	Batch sizes require full bags of hand ads. Approved supplier list for correct pre-weighed.		
	Physical None noted at this time				

R&S High Spirits Ethanol Partnership

--	--	--	--	--	--

Product Category: Animal Food Distillers Wet Grains & DDG's Intended Species: Weaned Beef Cattle Life Life Stage: Older than 4 months_____ PCQI: RR Date 9/14/21

Ingredient or Process Step	Known or reasonably foreseeable hazards introduced, increased or controlled at this step	Do known or reasonably foreseeable hazards require a preventive control based on Severity and Probability "Yes" or "No"	Explanation/Justification	Preventive Control Measures Applied	Is the Preventive Control Applied at this Step? "Yes" or "No"
Fermentation	Biological None noted at this time				
	Chemical None noted at this time				
	Physical None noted at this time				

R&S High Spirits Ethanol Partnership

--	--	--	--	--	--

Product Category: Animal Food Distillers Wet Grains & DDG's Intended Species: Weaned Beef Cattle Life Life Stage: Older than 4 months_____ PCQI: RR Date 9/14/21

Ingredient or Process Step	Known or reasonably foreseeable hazards introduced, increased or controlled at this step	Do known or reasonably foreseeable hazards require a preventive control based on Severity and Probability "Yes" or "No"	Explanation/Justification	Preventive Control Measures Applied	Is the Preventive Control Applied at this Step? "Yes" or "No"
Distillation	Biological None noted at this time				
	Chemical None noted at this time				
	Physical None noted at this time				

R&S High Spirits Ethanol Partnership

--	--	--	--	--	--

Product Category: Animal Food Distillers Wet Grains & DDG's Intended Species: __ Weaned Beef Cattle Life Stage: Older than 4 months_____ PCQI: RR Date 9/14/21

Ingredient or Process Step	Known or reasonably foreseeable hazards introduced, increased or controlled at this step	Do known or reasonably foreseeable hazards require a preventive control based on Severity and Probability "Yes" or "No"	Explanation/Justification	Preventive Control Measures Applied	Is the Preventive Control Applied at this Step? "Yes" or "No"
Centrifuge #1	Biological None noted at this time				
	Chemical None noted at this time				
	Physical None noted at this time				

R&S High Spirits Ethanol Partnership

--	--	--	--	--	--

Product Category: Animal Food Distillers Wet Grains & DDG's Intended Species: Weaned Beef Cattle Life Stage: Older than 4 months_____ PCQI: RR Date 9/14/21

Ingredient or Process Step	Known or reasonably foreseeable hazards introduced, increased or controlled at this step	Do known or reasonably foreseeable hazards require a preventive control based on Severity and Probability "Yes" or "No"	Explanation/Justification	Preventive Control Measures Applied	Is the Preventive Control Applied at this Step? "Yes" or "No"
Evaporator	Biological None noted at this time				
	Chemical None noted at this time				
	Physical None noted at this time				

R&S High Spirits Ethanol Partnership

--	--	--	--	--	--

Product Category: Animal Food Distillers Wet Grains & DDG's Intended Species: Weaned Beef Cattle Life Stage: Older than 4 months_____ PCQI: RR Date 9/14/21

Ingredient or Process Step	Known or reasonably foreseeable hazards introduced, increased or controlled at this step	Do known or reasonably foreseeable hazards require a preventive control based on Severity and Probability "Yes" or "No"	Explanation/Justification	Preventive Control Measures Applied	Is the Preventive Control Applied at this Step? "Yes" or "No"
Centrifuge #2	Biological None noted at this time				
	Chemical None noted at this time				
	Physical None noted at this time				

R&S High Spirits Ethanol Partnership

--	--	--	--	--	--

Product Category: Animal Food Distillers Wet Grains & DDG's Intended Species: Weaned Beef Cattle Life Stage: Older than 4 months_____ PCQI: RR Date 9/14/21

Ingredient or Process Step	Known or reasonably foreseeable hazards introduced, increased or controlled at this step	Do known or reasonably foreseeable hazards require a preventive control based on Severity and Probability "Yes" or "No"	Explanation/Justification	Preventive Control Measures Applied	Is the Preventive Control Applied at this Step? "Yes" or "No"
Dryer	Biological None noted at this time				
	Chemical None noted at this time				
	Physical None noted at this time				

R&S High Spirits Ethanol Partnership

--	--	--	--	--	--

Product Category: Animal Food Distillers Wet Grains & DDG's Intended Species: Weaned Beef Cattle Life Stage: Older than 4 months_____ PCQI: RR Date 9/14/21

Ingredient or Process Step	Known or reasonably foreseeable hazards introduced, increased or controlled at this step	Do known or reasonably foreseeable hazards require a preventive control based on Severity and Probability "Yes" or "No"	Explanation/Justification	Preventive Control Measures Applied	Is the Preventive Control Applied at this Step? "Yes" or "No"
Distillers Wet Grains Storage & Load out	Biological Possible spoilage of product	No	Shortage storage life at plant (1-2 days max).		
	Chemical 1) Sulfur level in finished product 2) Aflatoxin, Fumonisin 3) DON	no	1)~70% moisture so sulfur level not a concern 2) Label carries Aflatoxin less than 100 ppb and Fumonisin less than 30 ppm. 3) Grain coming from region of low instance of DON and advisory level is 30 ppm		

R&S High Spirits Ethanol Partnership

	Physical Possible contamination from metal, glass, plastic,etc.	no	Documented last load hauled stated prior to loading and SOP for truck load out (person responsible and scale ticket statement).		
--	---	----	---	--	--

Product Category: Animal Food Distillers Wet Grains & DDG's Intended Species: Weaned Beef Cattle Life Stage: Older than 4 months_____ PCQI: RR Date 9/14/21

Ingredient or Process Step	Known or reasonably foreseeable hazards introduced, increased or controlled at this step	Do known or reasonably foreseeable hazards require a preventive control based on Severity and Probability "Yes" or "No"	Explanation/Justification	Preventive Control Measures Applied	Is the Preventive Control Applied at this Step? "Yes" or "No"
DDG's w/solubles & Load Out	Biological None at this time				
	Chemical 1) Sulfur level in finished product 2) Aflatoxin, Fumonisin	yes	1) Monitoring and testing for sulfur in DDG's SOP (states frequency, person responsible and outside lab to test and levels of concern).Label states product should not consist of more than 50% of the overall diet. 2) Label carries Aflatoxin less than 100 ppb and Fumonisin less than 30 ppm. SOP for sampling of finished loads for retains and frequency for checking some retains for levels		

	3) DON		3) Grain coming from region of low instance of DON and advisory level is 30 ppm		
	Physical Physical Possible contamination from metal, glass, plastic, etc.	no	Documented last load hauled stated prior to loading and SOP for truck load out (person responsible and scale ticket statement).		

Product Category: Animal Food Distillers Wet Grains & DDG's Intended Species: Weaned Beef Cattle Life Stage: Older than 4 months _____ PCQI: RR Date 9/14/21

Date: _____ PCQI Initial: _____

Ingredient or Process Step	Known or reasonably foreseeable hazards introduced, increased or controlled at this step	Do known or reasonably foreseeable hazards require a preventive control based on Severity and Probability "Yes" or "No"	Explanation/Justification	Preventive Control Measures Applied	Is the Preventive Control Applied at this Step? "Yes" or "No"
	Biological				
	Chemical				
	Physical				

Identifying Critical Limits, Monitoring and Corrective Actions Form (5)

Process Step/CCP	Critical Limit	Monitoring Procedures	Corrective Action
None		<p>What will be measured?</p> <p>Where will the CL be measured?</p> <p>How will the CL be measured?</p> <p>Who will monitor the CL?</p> <p>How often will the CL be measured?</p>	<p>Cause of the deviation?</p> <p>How will the process be corrected?</p> <p>Product disposition?</p> <p>Measure to prevent recurrence?</p> <p>Who is responsible for implementing the CA?</p>

Product Category: DDG's w/Solubles and Distillers Wet Grains

Approved: RR

Date:
9/14/21

Product Category: DDG's w/Solubles & Distillers Wet Grains

Record Keeping and Verification Form (6)

Process step/CCP	Hazard	Records	Responsibility	CCP Verification
None				Short term Long term

Approved: RR

Date: 9/14/21

R&S High Spirits Ethanol Partnership SOP's

Animal Food Safety Plan Summary Form (8)

Process step and CCP	Hazard	Critical Limits for each CCP	Monitoring				Corrective Action	Verification Activities	Record-keeping Procedure
			What	How	Frequency	Who			
None									

Approved _____ RR _____

Date: _____ 9/14/21 _____